

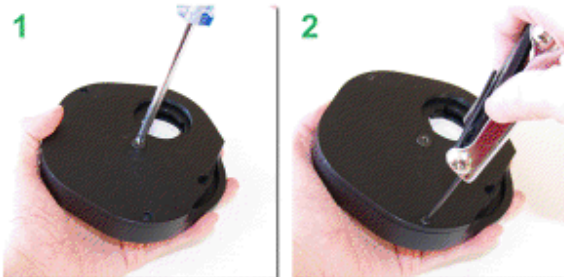
# OLIVON™

## 1.25" Multiple Filter Wheel Instructions

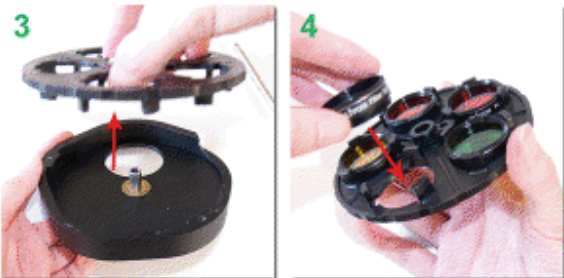
Thank you for your purchase of the Olivon 1.25" Multiple Filter Wheel. Please take a read through these setup instructions.

### Plugging the Filters onto the Wheel

There are two ways to plug the filters into the Olivon 1.25" Multiple Filter Wheel.



**1 & 2:** The first way is to take off the back cover plate by unscrewing the two edge hex screws and the central cross screw.

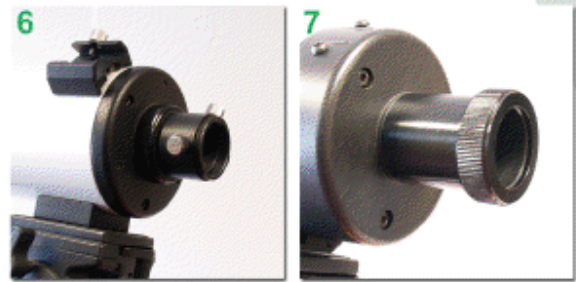


**3:** Then pull out the filter wheel. **4:** After pulling it out, flip the wheel, so the filter fastening prongs are upwards. Pop the filters into each of the five pronged slots, until they're fitted in. Flip the wheel around and replace it back into the wheel's casing. Then refit the back cover into place with the screws back in.



**5:** Alternatively, you can pop the filters onto the wheel through the nose-piece hole from the front of the filter wheel. Just rotate the wheel from the side to move to the next empty slot. Make sure each filter is fitted into each slot between the prongs.

### Telescope attachment



The Olivon 1.25" Multiple Filter Wheel can be inserted into either a screw knob (6) or a knurled knob (7) eyepiece adapter as shown in pictures above.



**8:** Before you can attach the Olivon 1.25" Multiple Filter Wheel onto your telescope, you will have to attach the nose-piece onto the nose-piece hole of the front cover plate. **9:** Then attach your 1.25" eyepiece adapter to your eyepiece, before you try to screw it onto the Multiple Filter Wheel.



**10:** Once everything is attached, the Olivon 1.25" Multiple Filter Wheel is ready to be used. To switch to another filter, just slide the Filter Wheel on the right to the desired filter.